

ENGL 1102: American Gothic



1Eudora Welty, "Bottle Trees." (Source: eudorawelty.org)

“Our fiction....is, bewilderingly and embarrassingly, a gothic fiction, nonrealistic and negative, sadist and melodramatic – a literature of darkness and the grotesque in a land of light and affirmation...our classic [American] literature is a literature of horror”—Leslie Fiedler, *Love and Death in the American Novel*

Basic Course Information

Monday, Wednesday, Friday
Section G7
12:05-12:55
Skiles 168

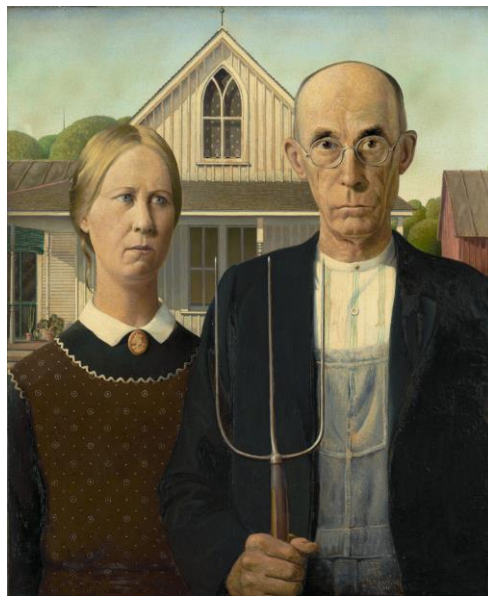
Monica Miller, PhD
monica.miller@lmc.gatech.edu
Office Location: Skiles 329
Office Hours: MW, 1:00-2:30 and by
appointment

Course Goals

English 1102 introduces students to the principles and practices of communication they need in their academic and professional lives. The goal of classes in the Writing and Communication Program is for students to develop competence and confidence in all communication modalities (Written, Oral, Visual, Electronic, and Nonverbal) and to understand how effective communication balances multiple modalities thoughtfully and synergistically. English 1102 addresses rhetorical principles and multimodal composition while it introduces research as well as cultural studies and literary/discourse analysis. Students will develop an understanding of the genre on which the project focuses as well the rhetorical processes involved in creating examples of that genre. Projects will create purposeful, audience-directed texts that present well-supported arguments using appropriate conventions of written, oral, visual, and/or nonverbal communication. Using the learning outcomes established by the University System Board of Regents, and the Council of Writing Program Administrators, Georgia Tech's Writing and Communication Program has set the following desired [learning outcomes and learning expectations](#) for English 1102.



Gordon Parks, "American Gothic, Washington, D.C." (Source: Wikipedia)



Grant Wood, "American Gothic" (Source: Wikipedia)



Unattributed parody (Source: "American Gothic – Une parodie triste," Féminisms.net)

Thematic Description

This course is intended to introduce students to the study of fiction through a focus on a variety of texts which may be categorized as "American Gothic." What is the Gothic? How has the tradition of the Gothic unfolded and evolved through its expression in American literature? In this course, we will explore the paranoia, lust, and violence at the heart of these works. This course will involve students in an investigation of the ways in which factors such as race, class, and region intersect with gender and sexuality in the assigned texts and what those intersections can teach us about literary history and the various ways in which the Gothic has been deployed over time. Assignments will include a literature review, a group oral presentation on an author, and a book trailer.

Required Materials

- ◆ *WOVEN Textbook*-- Georgia Tech e-book from Bedford / St. Martin's. The e-book is available for purchase at <http://ebooks.bfwpub.com/gatech.php>. Access codes are also available at Engineer's and GT Barnes and Noble. If you took 1101, you should still have access to this.
- ◆ Allan Lloyd-Smith: *American Gothic Fiction: An Introduction*
- ◆ William Faulkner: *As I Lay Dying* (The Corrected Text) (Vintage; Reissue edition (January 30, 1991))
- ◆ Brent Hendricks: *A Long Day at the End of the World*
- ◆ Toni Morrison: *Beloved*
- ◆ Flannery O'Connor: *The Complete Stories* (Farrar, Straus and Giroux; Reissue edition (January 1, 1971))
- ◆ Donna Tartt: *The Secret History*
- ◆ Laptop computer—please bring to class daily.
- ◆ Access to T-Square and various web-based resources.

*****Note!** You must bring your readings to class. If you come unprepared (without easily accessible readings), you will not be able to earn full participation points.***

Assignments and Grading

Grade Scale

◆ Common Reading Project.....5%	◆ 90-100A
◆ In-class work/Quizzes.....10%	◆ 80-89B
◆ Participation/QHQs/Debriefings..10%	◆ 70-79C
◆ Text Analysis.....15%	◆ 60-69D
◆ Group Author Project.....15%	◆ Below 60F
◆ Book Trailer Project.....25%	
◆ Portfolio20%	

Important Course Deadlines

◆ Text Analysis Final Paper Due	Friday, 2/13
◆ Annotated Bibliography Due	Monday, 3/9
◆ Book Trailer Due	Friday, 4/17
◆ Portfolio Due at Final Exam Time:	Friday, May 1, 2:20pm

Course Late Work Policy

Assignments must be handed or submitted electronically by the beginning of class in which they are due. Anything uploaded more than ten (10) minutes late will be considered a late assignment and will be appropriately penalized. ****The exception to this policy is the revised rough draft for the first and third projects. These should be submitted electronically to Dr. Miller by the end of class.*

Late assignments are accepted after they were initially due for a penalty of one letter grade (10%) credit per day.

Make-up work. You are responsible for finding out what work and information you miss during your absences. Except for absences officially exempted by the Institute or exceptional and unanticipated situations, I do not allow students to make up missed quizzes, presentations, or in-class assignments.

Course Participation Grading

The Writing and Communication Program has a [Program-wide participation policy](#). In this class, participation counts as 10% of your grade. Active participation and engagement in class are required. Students who have not done the reading and/or who do not actively participate during the class period may be penalized for lack of participation. I expect that everyone will read and participate in class activities and discussions about the materials. We will have whole class discussions, small group work, and other activities that will all contribute towards your participation grade. If you are surfing the web, emailing, working on assignments for other classes, or are otherwise occupied, you will be marked with a zero for that day. Cell phones must be turned off during class unless you are specifically using it for an assignment.

There are two weekly assignments which will form part of your weekly participation grade. The first is the QHQ assignment, due by class time on Mondays. The other is a weekly debriefing, due by 5pm on Fridays. More information about both of these is available on T-Square.

Academic Misconduct

One serious kind of academic misconduct is plagiarism, which occurs when a writer, speaker, or designer deliberately uses someone else's language, ideas, images, or other original material or code without fully acknowledging its source by quotation marks as appropriate, in footnotes or endnotes, in works cited, and in other ways as appropriate (modified from WPA Statement on "Defining and Avoiding Plagiarism"). If you engage in plagiarism or any other form of academic misconduct, you will fail the assignment in which you have engaged in academic misconduct and be referred to the Office of Student Integrity, as required by Georgia Tech policy. I strongly urge you to be familiar with these Georgia Tech sites:

- ◆ Honor Challenge — <http://www.honor.gatech.edu/>
- ◆ Office of Student Integrity — <http://www.osi.gatech.edu/index.php/>
- ◆ Process for academic misconduct — <http://www.osi.gatech.edu/plugins/content/index.php?id=15>

Writing and Communication Policies

Department policies are available [here](#). I expect you to read the policies posted by the Writing and Communication Program. *You are responsible for knowing this information.* Please pay particular attention to policies regarding attendance.

Syllabus Modifications

This syllabus—particularly the required reading and assignment schedule—may be modified as the semester progresses to meet course outcomes and address the needs of members of the class.

Resources

There are a number of services and resources of which you, as a Georgia Tech student, should be aware. First, makes sure that you know your academic advisor and how to contact him or her. Here are a few additional resources you may find useful; I encourage to become familiar with as many of these as you can:

- ◆ [Georgia Tech Communication Center](#)
- ◆ [Dean of Students](#)
- ◆ [Stamps Student Health Services](#)
- ◆ [Intercollegiate Athletics](#)
- ◆ [Campus Recreation Center](#)
- ◆ [Women's Resource Center](#)
- ◆ [Pride Alliance](#)
- ◆ [DramaTech Theater](#)
- ◆ [Poetry at Tech](#)

In addition, your Buzz Card entitles you to a number of student discounts around the area. Check out discounts on [MARTA passes](#), the [High Museum](#), the [Ferst Center for the Arts](#), and many other local attractions. Always ask if student discounts are available!

Spring 2015 Schedule

All readings/projects are due on the day listed

Week	Date	Topic	Readings & Work Due
Introduction and Project One Project			
1	M 1/5	Course Introduction	<p><i>For Wednesday:</i> *Review syllabus; come with questions/concerns about syllabus *Sign and return syllabus form *Read Project One story</p> <p><i>For Friday:</i> *Read one of the supplementary articles. *Answer question on T-Square by class time; be prepared to discuss it with your classmates in class.</p>
	W 1/7	Course Overview	
	F 1/9	Project One Work	
American Gothic Roots			
2	M 1/12	Introduction to the Gothic	<p>*Project One Video link should be submitted to T-Square by class time. *Read <i>American Gothic Fiction</i> 3-9, 25-35 *WOVEN 80.a-k</p> <p>*Read "Fall of the House of Usher" (<i>T-Square</i>)</p> <p>*Submit syllabus forms on T-Square *Read "Young Goodman Brown" (<i>T-Square</i>)</p>
	W 1/14	Edgar Allan Poe	
	F 1/16	Nathaniel Hawthorne	
3	M 1/19	MLK HOLIDAY	<p>NO CLASS</p> <p>*Submit QHQ by class time *WOVEN 19b-c *"The Yellow Wallpaper" (<i>T-Square</i>)</p> <p>"The Tartarus of Maids" (<i>T-Square</i>)</p>
	W 1/21	Introduction to Text Analysis Charlotte Perkins Gilman	
	F 1/23	Herman Melville	
Southern Gothic			
4	M 1/26	William Faulkner	<p>*As <i>I Lay Dying</i> (1-74)</p> <p>***COMM LAB ORIENTATION—MEET IN COMM LAB IN CLOUGH*** *AILD (75-102)</p> <p>*AILD (103-136)</p>
	W 1/28	William Faulkner	
	F 1/30	William Faulkner	

5	M 2/2	William Faulkner	**VIRTUAL CLASS** *Finish <i>AILD</i> *Complete T-Square assignment by end of class time.
	W 2/4	Flannery O'Connor	*Read "Good Country People" and "The Life You Save May Be Your Own."
	F 2/6	Flannery O'Connor	*Read "Revelation" and "A Good Man is Hard to Find"
6	M 2/9	Peer Review	*Rough Draft of Text Analysis Due by Class Time *No QHQ due this week *Read <i>WOVEN</i> Section 27
	W 2/11	Optional In-Class Work Day	*Attendance optional
	F 2/13	Reflection	*Text Analysis Paper Due by Class Time *Reflection due by 5:00pm *No debriefing this week *Read <i>WOVEN</i> 48g
Gothic Horror			
7	M 2/16	Introduction to Gothic Horror	*Read <i>WOVEN</i> 65-127
	W 2/18	Library instruction	*Read <i>WOVEN</i> 36.
	F 2/20	Edith Wharton	*Read "Miss Mary Pask"
8	M 2/23	Toni Morrison	*Read <i>Beloved</i> 1-100.
	W 2/25	Toni Morrison	*Read <i>Beloved</i> 101-133
	F 2/27	Toni Morrison	**VIRTUAL CLASS** *Read <i>Beloved</i> 134-156 *Complete T-Square assignment by end of class time.
9	M 3/2	Toni Morrison	*Read <i>Beloved</i> 157-252
	W 3/4	Toni Morrison	*Finish <i>Beloved</i>
	F 3/6	Peer Review Workshop	*Rough Draft of Annotated Bibliography due by class time

Suburban Gothic

10	M 3/9	Final Project Introduction to Book Trailer Project	<p>*Annotated Bibliography Due</p> <p>*Watch book trailers (T-Square)</p> <p>*Read handout on proposals (<i>T-Square</i>)</p>
	W 3/11	Library Day	<p>*Meet at the Home Rice Center in the Library (2nd floor of the library—the computer lab behind the elevators, near maps and special formats).</p>
	F 3/13	Introduction to the Suburban Gothic	<p>*Read “Introduction: Welcome to Disturbia” from Bernice Murphy, <i>The Suburban Gothic in American Popular Culture</i> (Electronic copy available through GT Library)</p>
11	M 3/16 through F 3/21	SPRING BREAK	NO CLASS MEETINGS
12	M 3/23	Donna Tartt	*Read <i>The Secret History</i> 1-128
	W 3/25	Donna Tartt	*Read 129-194
	F 3/27	Donna Tartt	*Read 194-254
13	M 3/30	Donna Tartt	*Read 255-385
	W 4/1	Donna Tartt	*Read 385-452
	F 4/3	Donna Tartt	*Finish <i>The Secret History</i>
14	M 4/6	Visual Communication	<p>*Read <i>WOVEN</i> 92</p> <p>*Read Hendricks 1-99</p>
	W 4/8	Brent Hendricks	<p>*Read <i>WOVEN</i> 93 and 95</p> <p>*Read Hendricks 100-145</p>
	F 4/10	Brent Hendricks	<p>**Finish Hendricks</p> <p>**Meet in 103 Hall. Bring 1-2 questions prepared to ask during the Skype session with the author.</p>
15	M 4/13	Rough Draft Workshop	<p>*Rough draft of book trailer and essay due by class time</p> <p>*No QHQ due this week</p>
	W 4/15	In-Class Workday	*Attendance optional.
	F 4/17	Final Paper Due Final Portfolio Introduction	<p>*Final book trailer and essay due by class time.</p> <p>*Reflection due by 5:00pm</p> <p>*No debriefing this week</p> <p>*Introduction to portfolio</p>

16	M 4/20	*Final Portfolio	* No QHQ this week *Read <i>WOVEN</i> 47
	W 4/23	*Portfolio Workshop	* Bring rough draft of portfolio to class. For full credit, you must submit at least a thesis statement and a detailed outline.
	F 4/24	*In-class work day	* No debriefing this week
<i>Portfolio due Friday, May 1, 2:20pm</i>			

Please read, sign, and return these statements to Dr. Miller:

I affirm that I have read the entire syllabus and policy sheet for ENGL 1102 and understand the information and the responsibilities specified.

print full name

legible signature

date

DIRECTIONS: Read carefully and check all that apply.

I give my instructor, Dr. Monica Miller, permission to use copies of the work I do for this course, ENGL 1102 as examples in presentations and in print and electronic publications.

I do not want my work used as examples in any situations.

If you give permission for your work to be used, please indicate how you want to be acknowledged:

Please acknowledge me by name.

Please use my work, but do not acknowledge me by name.

The following information enables me to contact you if your work is used.

print full name

legible signature

print permanent address

print campus address

phone

email address

date